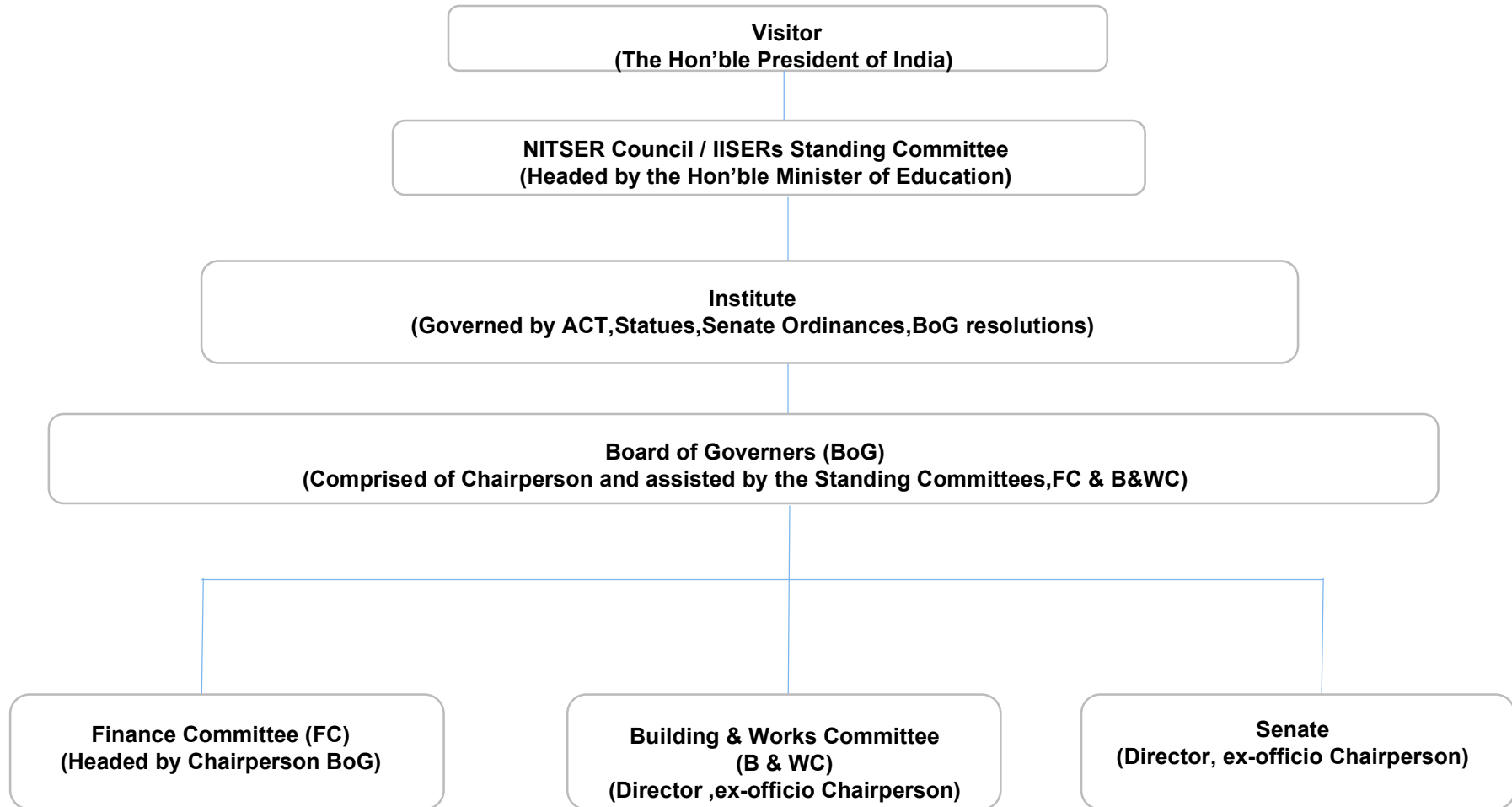




## Indian Institute of Science Education and Research Mohali

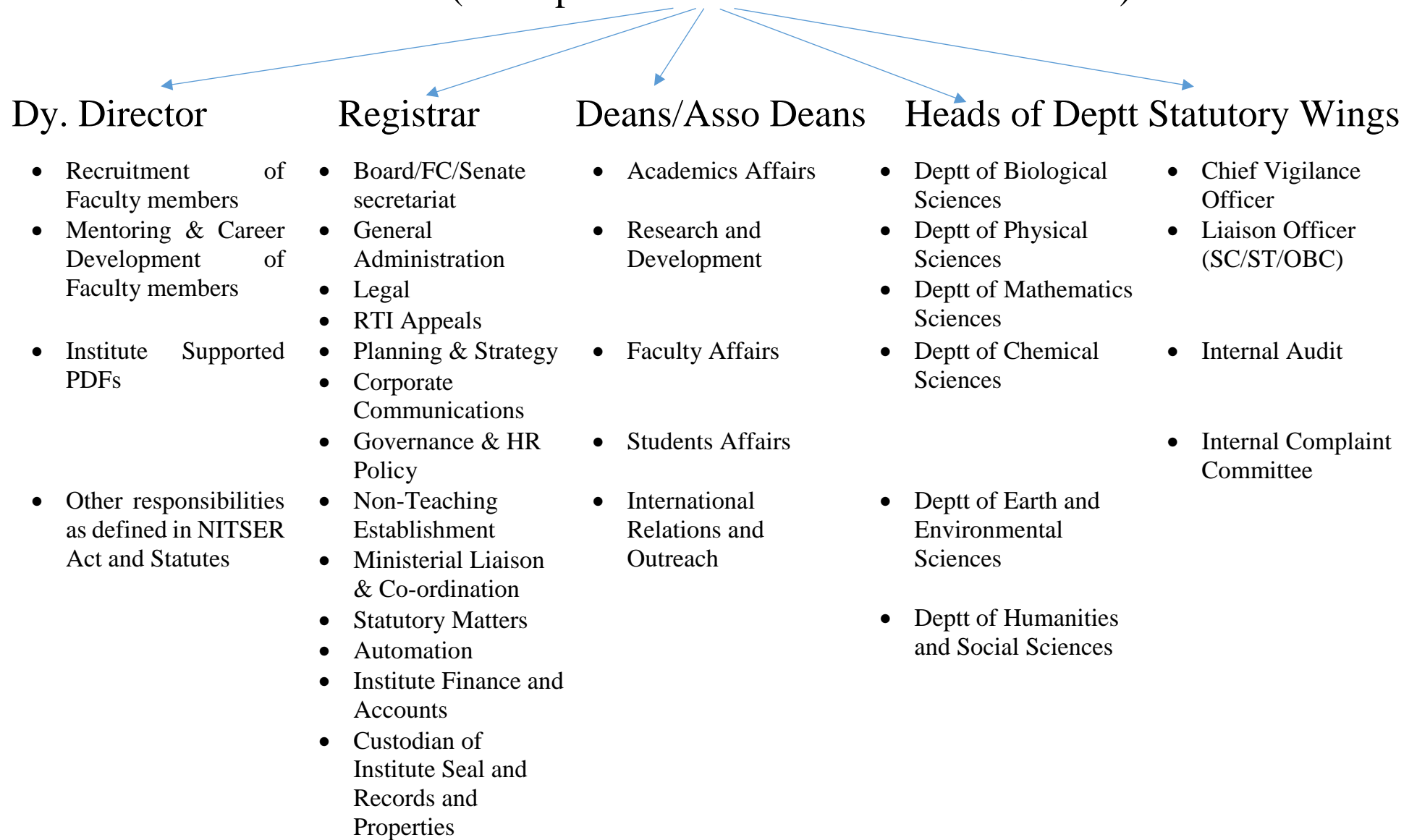
Administrative setup to facilitate Academic and Research Functions of Institute

# IISER System Governance Structure



# IISER Mohali Executive Hierarchy

## Director (Principal Academic and Executive Officer)



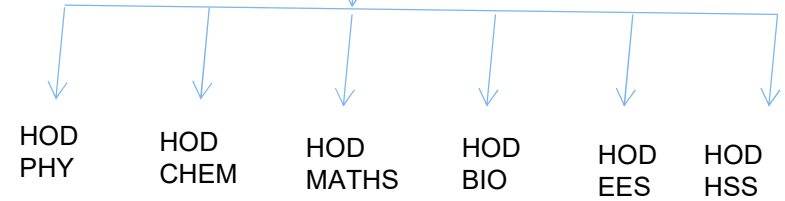
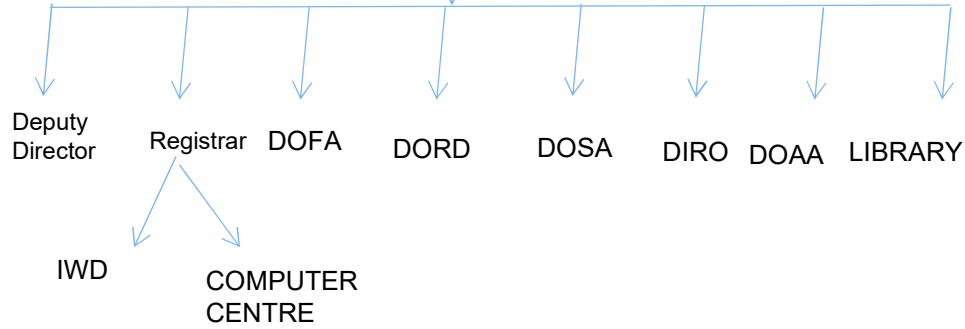
**Govt. of India/Ministry of Education**

**Chairperson, BoG**

**Director**

**Administrative/Policy Divisions**

**Academic Division**



## **Functions under Deputy Director**

- Faculty Recruitment
- Institute Supported PDF
- Research Associates
- Mentoring and Career Development of Faculty Members
- All other responsibilities of Deputy Director as defined in NITSER ACT & IISER Statutes

## **Functions under Registrar**

- Board/FC/Senate Secretariat.
- General Administration
- Legal
- RTI Appeals
- Planning and Strategy
- Corporate Communications
- Governance & HR Policy
- Non Faculty Recruitment
- Establishment
- Ministerial Liaison and co-ordination
- Automation
- Statutory Matter
- Custodian of Institute Seal/Records/Properties

## **Functions under Academics Affairs**

- Admissions
- Academic Programs Courses and Calendar
- Examinations and Results
- Convocation
- Academic Collaborations
- NAD
- Academics Awards

## **Functions under Students' Affairs**

- Council of Wardens
- Students Activities
- Hostels/Mess Management
- Student Welfare & Amenities
- Students Clubs
- Students Event
- Counselling Cell
- Sports and Physical Education
- Inter and Intra IISER Sports Meet
- Anti-Ragging Cell



## **Functions under Research and Development Affairs**

- R&D Infrastructure Plg. & Mgmt.
- Project Grant Management and Review
- Project Staff & Project PDF recruitment
- IPR/TBI
- MoU with MOE
- Research and Academic Collaborations
- DSIR
- Annual Report
- Central Facilities

## **Functions under International and Outreach**

- Alumni Outreach and Re-unions.
- International Delegations
- Outreach Activities.